



# challenge



## COLOUR CARD & PRODUCT INFORMATION

Non-Toxic • Water-based • Acrylic Paint  
Australian Made

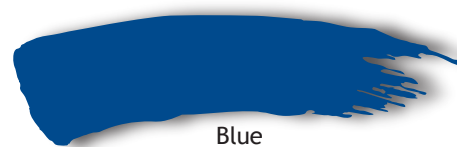
Available in easy to squeeze 500ml and 2 litre bottles, Derivan Challenge is a bright, fun paint for children - and an economical choice for parents, carers and educators.



White



Ultra Blue



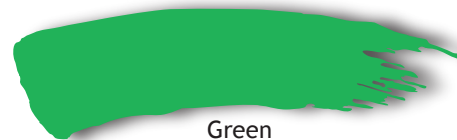
Blue



Yellow



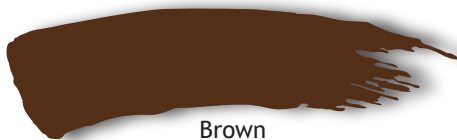
Orange



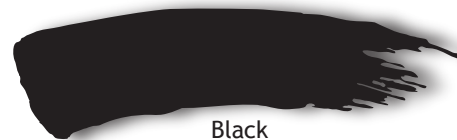
Green



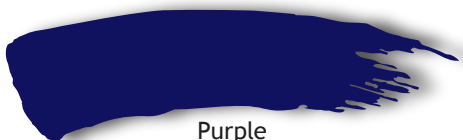
Red



Brown



Black



Purple

# challenge

NB: Colours in this colour chart are as accurate as conventional printing allows

### USE

Derivan Challenge has been formulated as a safe, non-toxic paint to be used by children for painting, block and potato prints, mono prints, silk screen printing and as a general art education paint. Derivan Challenge can be painted on most porous surfaces including card, cardboard, paper and canvas.

Derivan Challenge is available in easy to use 500ml and economical 2 litre collapsible bottles. Also available from Derivan is a pump which makes dispensing from the 2 litre bottle a breeze.

Derivan Challenge can be made water resistant by the addition of Derivan Polymer Gloss Varnish (water-based).

### COLOUR MIXING:

All the colours may be intermixed to form bright secondary and tertiary colours.

### CLEAN UP

While paint is wet, wash all utensils, brushes and hands with soap and water to clean up.

### HEALTH AND SAFETY:

Derivan Challenge is a non-toxic water-based paint and is suitable for young children. Avoid contact with eyes as the glitters may act as an abrasive, causing irritation. For further information, download the Safety Data Sheet from our website: [www.matisse.com.au](http://www.matisse.com.au).

### REMOVAL OF PAINT STAINS:

Derivan children's paints are formulated to be easily removed from clothing. However, old clothing should be worn as some fabrics may stain. Pigments rather than dyes are used as dyes tend to stain much more readily.

**Wet stains:** Place stained area of

garment under a tap of cold running water, holding balance of garment above the stain so that the colour does not spread. After removing the surplus paint, place wet garment on a towel and rub ordinary household soap into the stain working the heavily soaped wet cloth area between your fingers in a rolling action using the thumb and forefinger of each hand on either side of the stain. Do not rub the stain directly.

Wash the area under cold water and repeat procedure 2 or 3 times till all colouring is removed. Dry out wet garment by wrapping in a towel and twisting to remove excess moisture.

**Dried stains:** Prepare a bucket or sink with lukewarm water, using plenty of household or laundry soap, immerse the garment and let it soak for 15 minutes to wet out properly.